

TRANSPOSITION INQUISITION

No. 119

EXCERPTS FROM

ADVANCED STUDIES

FOR B \flat BASS

by

H. W. Tyrell

ANALYSIS:

Phrase 1

Key of E \flat Major: V I I⁶⁴ V⁴³ I V I - - - - - V⁷ - - - - -

(IAC) (HC)

V⁷ - - - - - V⁶⁵ - - - - - V⁴³ - - - - - V

HC

Phrase 2

I - - - - - V⁷ - - - - - I - - - - - IV⁷ - - - - - iii⁷ - - - - - ii - - - - - V I

(PAC) PAC

Advanced Studies for B \flat Bass

TRANSPOSITION INQUISITION No. 119

H. W. Tyrell
arr. Martorano

Study: No. 1
Measures: 1-24
Original Key: E flat Major
Original Tempo: Andante Moderato (half note = 84 bpm)

1-11) CHROMATICALLY ASCENDING TO 8VA



③



First staff of musical notation for exercise 3, starting with a bass clef and a key signature of four flats (B-flat, E-flat, A-flat, D-flat). The notation consists of a sequence of notes and rests.



Second staff of musical notation for exercise 3, continuing the sequence of notes and rests.



Third staff of musical notation for exercise 3, ending with a double bar line and a repeat sign.

④



First staff of musical notation for exercise 4, starting with a bass clef and a key signature of one flat (B-flat). The notation consists of a sequence of notes and rests.



Second staff of musical notation for exercise 4, continuing the sequence of notes and rests.



Third staff of musical notation for exercise 4, ending with a double bar line and a repeat sign.

⑤



First staff of musical notation for exercise 5, starting with a bass clef and a key signature of four flats (B-flat, E-flat, A-flat, D-flat). The notation consists of a sequence of notes and rests.



Second staff of musical notation for exercise 5, continuing the sequence of notes and rests.



Third staff of musical notation for exercise 5, ending with a double bar line and a repeat sign.

⑥

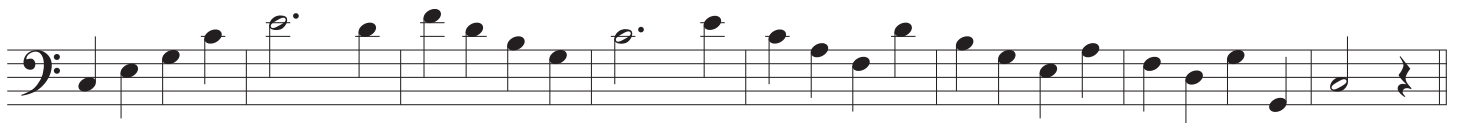
Exercise 6: Three staves of music in bass clef, key signature of two sharps (F# and C#). The first staff begins with a circled '6'. The music consists of eighth and quarter notes with dotted half notes.

⑦

Exercise 7: Three staves of music in bass clef, key signature of one flat (Bb). The first staff begins with a circled '7'. The music consists of eighth and quarter notes with dotted half notes.

⑧

Exercise 8: Three staves of music in bass clef, key signature of three sharps (F#, C#, G#). The first staff begins with a circled '8'. The music consists of eighth and quarter notes with dotted half notes.



Advanced Studies for B \flat Bass

TRANSPOSITION INQUISITION No. 119

H. W. Tyrell
arr. Martorano

Study: No. 1
Measures: 1-24
Original Key: E flat Major
Original Tempo: Andante Moderato (half note = 84 bpm)

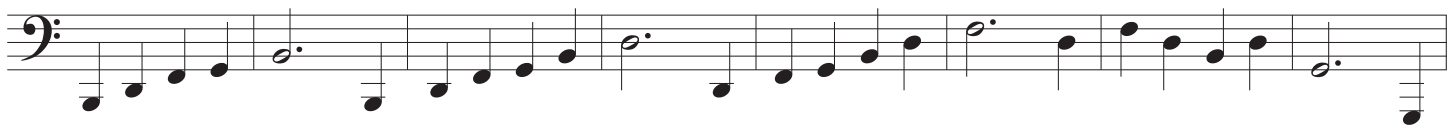
12-22) CHROMATICALLY DESCENDING TO 8VB



⑭



First staff of exercise 14, bass clef, starting with a whole note G2 and a half note G2-A2-B2.



Second staff of exercise 14, bass clef, continuing the sequence with a whole note G2 and a half note G2-A2-B2.



Third staff of exercise 14, bass clef, ending with a whole note G2 and a half note G2-A2-B2.

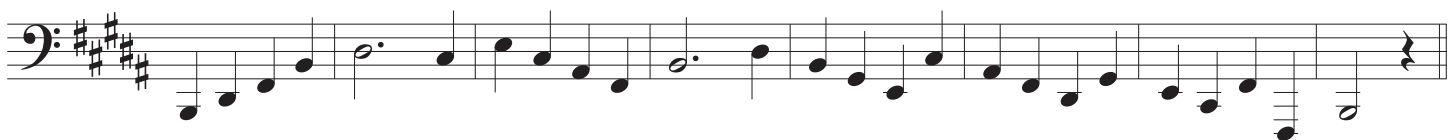
⑮



First staff of exercise 15, bass clef, key signature of three sharps (F#, C#, G#), starting with a whole note G2 and a half note G2-A2-B2.



Second staff of exercise 15, bass clef, continuing the sequence with a whole note G2 and a half note G2-A2-B2.



Third staff of exercise 15, bass clef, ending with a whole note G2 and a half note G2-A2-B2.

⑯



First staff of exercise 16, bass clef, key signature of one flat (Bb), starting with a whole note G2 and a half note G2-A2-B2.



Second staff of exercise 16, bass clef, continuing the sequence with a whole note G2 and a half note G2-A2-B2.



Third staff of exercise 16, bass clef, ending with a whole note G2 and a half note G2-A2-B2.

17

18

19

20

21

22