

TRANSPOSITION INQUISITION

No. 135

EXCERPTS FROM

ADVANCED STUDIES

FOR B \flat BASS

by

H. W. Tyrell

ANALYSIS:

Phrase 1

Key of D \flat Maj: I V I

V I vii^{o6} I

V⁷ I

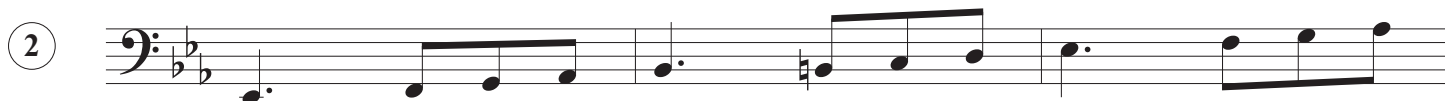
Advanced Studies for B \flat Bass

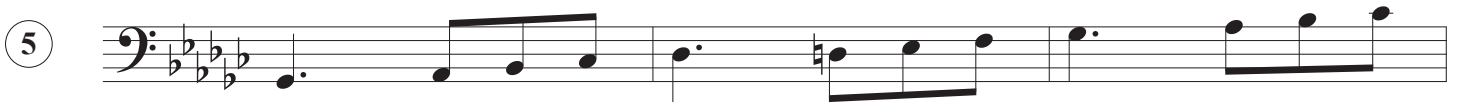
TRANSPOSITION INQUISSION No. 135

H. W. Tyrell
arr. Martorano

Study: No. 17
Measures: 1-9
Original Key: D \flat Major
Original Tempo: Tempo di Valse (quarter note = 136 bpm)

1-11) CHROMATICALLY ASCENDING TO 8VA





⑥

Musical notation for exercise 6, bass clef, key signature of one sharp (F#). It consists of three staves. The first staff has a dotted quarter note followed by an eighth note beamed to a quarter note, then a dotted half note, and a quarter note. The second staff has a quarter note, a quarter rest, a quarter note, a quarter note, a quarter note, a quarter note, a quarter note, and a quarter note. The third staff has a quarter note, a quarter note, a quarter note, a quarter note, a quarter note, a quarter note, a quarter note, a quarter note, a quarter note, a quarter note, a quarter note, and a quarter note.

⑦

Musical notation for exercise 7, bass clef, key signature of three flats (Bb, Eb, Ab). It consists of three staves. The first staff has a dotted quarter note followed by an eighth note beamed to a quarter note, then a dotted half note, and a quarter note. The second staff has a quarter note, a quarter rest, a quarter note, a quarter note, a quarter note, a quarter note, a quarter note, and a quarter note. The third staff has a quarter note, a quarter note, a quarter note, a quarter note, a quarter note, a quarter note, a quarter note, a quarter note, a quarter note, a quarter note, a quarter note, and a quarter note.

⑧

Musical notation for exercise 8, bass clef, key signature of two sharps (F#, C#). It consists of three staves. The first staff has a dotted quarter note followed by an eighth note beamed to a quarter note, then a dotted half note, and a quarter note. The second staff has a quarter note, a quarter rest, a quarter note, a quarter note, a quarter note, a quarter note, a quarter note, and a quarter note. The third staff has a quarter note, a quarter note, a quarter note, a quarter note, a quarter note, a quarter note, a quarter note, a quarter note, a quarter note, a quarter note, a quarter note, and a quarter note.

9

Exercise 9 consists of three staves in bass clef with a key signature of one flat. The first staff contains a melodic line starting with a quarter note, followed by eighth notes, and a sharp sign above the second measure. The second and third staves contain accompaniment with quarter and eighth notes.

10

Exercise 10 consists of three staves in bass clef with a key signature of three sharps. The first staff contains a melodic line starting with a quarter note, followed by eighth notes, and a sharp sign above the second measure. The second and third staves contain accompaniment with quarter and eighth notes.

11

Exercise 11 consists of three staves in bass clef with a key signature of one flat. The first staff contains a melodic line starting with a quarter note, followed by eighth notes, and a sharp sign above the second measure. The second and third staves contain accompaniment with quarter and eighth notes.

17

Musical notation for exercise 17, consisting of three staves in bass clef with a key signature of one sharp (F#). The first staff contains a sequence of notes: G2, A2, B2, C3, D3, E3, F#3, G3, A3, B3, C4. The second staff contains a sequence: G2, A2, B2, C3, D3, E3, F#3, G3, A3, B3, C4. The third staff contains a sequence: G2, A2, B2, C3, D3, E3, F#3, G3, A3, B3, C4.

18

Musical notation for exercise 18, consisting of three staves in bass clef with a key signature of four flats (Bb, Eb, Ab, Db). The first staff contains a sequence of notes: G2, A2, B2, C3, D3, E3, F#3, G3, A3, B3, C4. The second staff contains a sequence: G2, A2, B2, C3, D3, E3, F#3, G3, A3, B3, C4. The third staff contains a sequence: G2, A2, B2, C3, D3, E3, F#3, G3, A3, B3, C4.

19

Musical notation for exercise 19, consisting of three staves in bass clef with a key signature of one flat (Bb). The first staff contains a sequence of notes: G2, A2, B2, C3, D3, E3, F#3, G3, A3, B3, C4. The second staff contains a sequence: G2, A2, B2, C3, D3, E3, F#3, G3, A3, B3, C4. The third staff contains a sequence: G2, A2, B2, C3, D3, E3, F#3, G3, A3, B3, C4.

20

2

21

22