

If I Only Had a Brain

Transposition Inquisition No. 33

Harold Arlen/Yip Harburg

arr. Martorano

Dorothy: *Why - you did say something. didn't you?*

Are you doing that on purpose, or can't you make up your mind?

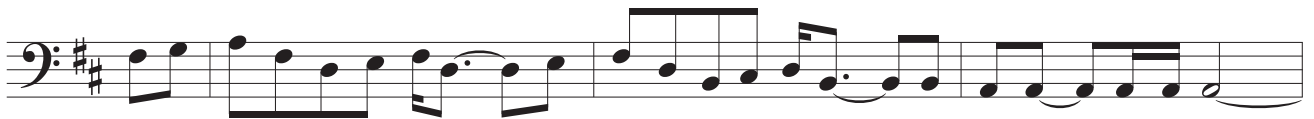
Scarecrow: *That's the trouble. I can't make up my mind. I haven't got a brain, only straw.*

Dorothy: *Well, how can you talk if you haven't got a brain?*

Scarecrow: *I don't know. But some people without brains do an awful lot of talking, don't they?*

Dorothy: *Yes, I guess you're right.*

Swing! $\text{♩} = \text{♩}^{\text{3}}$



mi fa Sol mi Do re mi Do re mi Do la ti Do la la Sol Sol Sol Sol
3 4 5 3 1 2 3 1 2 3 1 6 7 1 6 6 5 5 5 5 5



Do ti la la Sol fa mi re Do ti ti la Sol fa mi re Do Do Do Do
1 7 6 6 5 4 3 2 1 7 7 6 5 4 3 2 1 1 1 1 1 1

1. (Bass Clef) Moving Chromatically Downward to Lowest Notes (No. 1 -21)



③



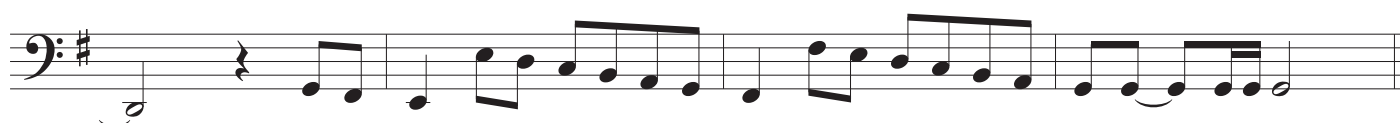
④



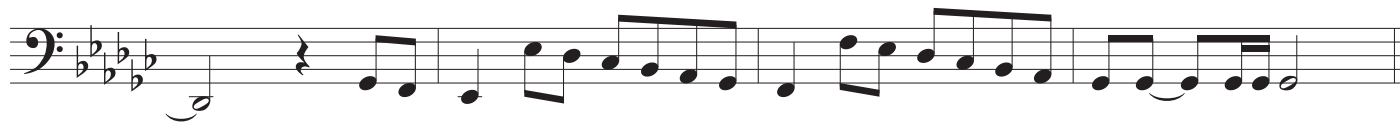
⑤



⑥



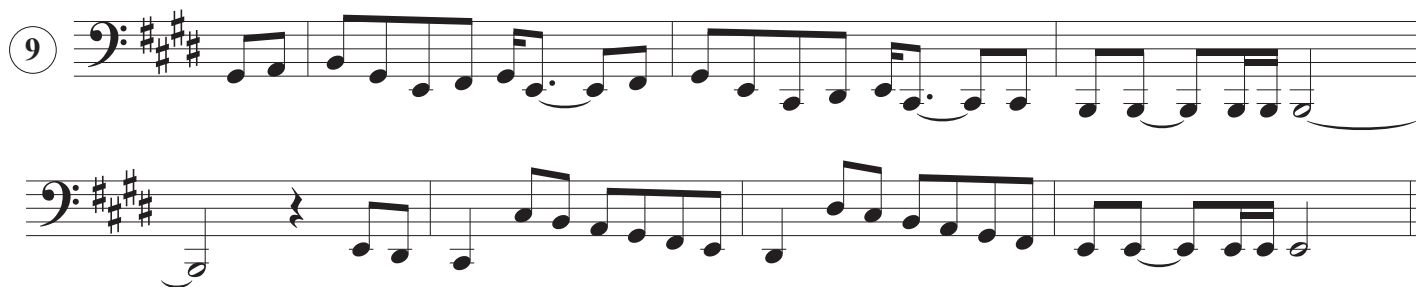
⑦



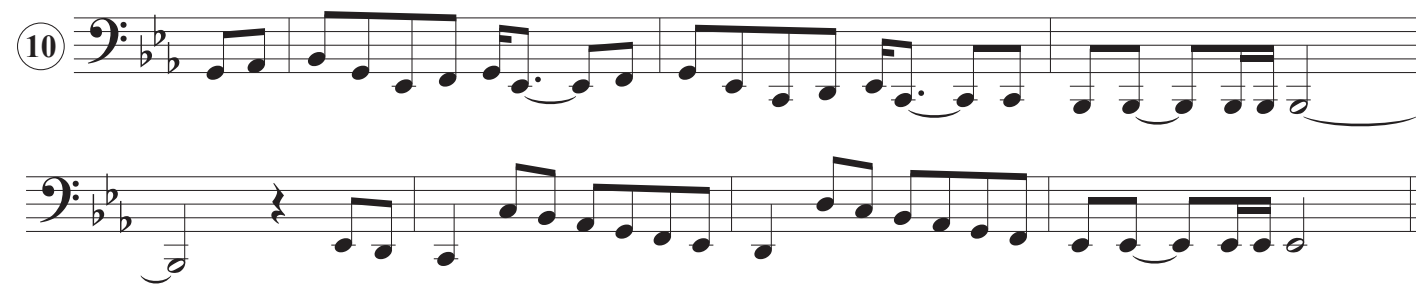
⑧




⑨



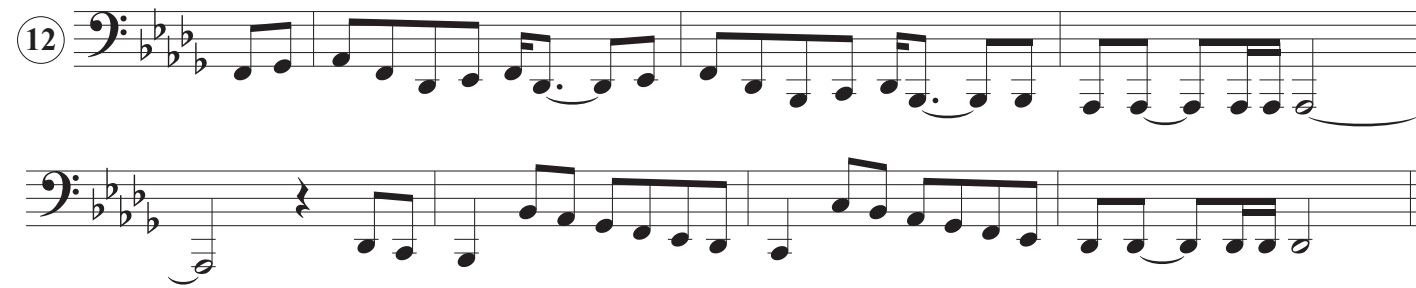
⑩



⑪



⑫



⑬

Two staves of music in bass clef. The first staff contains measures 13 and 14. The second staff contains measures 15 and 16. The key signature is one sharp (F#). The melody consists of eighth and sixteenth notes, often beamed together. The bass line features a steady eighth-note accompaniment.

⑭

Two staves of music in bass clef. The first staff contains measures 13 and 14. The second staff contains measures 15 and 16. The key signature is two sharps (F#, C#). The melody consists of eighth and sixteenth notes, often beamed together. The bass line features a steady eighth-note accompaniment.

⑮

Two staves of music in bass clef. The first staff contains measures 13 and 14. The second staff contains measures 15 and 16. The key signature is two flats (Bb, Eb). The melody consists of eighth and sixteenth notes, often beamed together. The bass line features a steady eighth-note accompaniment.

⑯

Two staves of music in bass clef. The first staff contains measures 13 and 14. The second staff contains measures 15 and 16. The key signature is three sharps (F#, C#, G#). The melody consists of eighth and sixteenth notes, often beamed together. The bass line features a steady eighth-note accompaniment.

⑰

Two staves of music in bass clef. The first staff contains measures 13 and 14. The second staff contains measures 15 and 16. The key signature is three flats (Bbb, Ebb, Ab). The melody consists of eighth and sixteenth notes, often beamed together. The bass line features a steady eighth-note accompaniment.

18

Musical notation for system 18, measures 1-4. The first staff is a bass clef with a key signature of one sharp (F#). It contains a melodic line with eighth and sixteenth notes. The second staff is a bass clef with a key signature of one sharp, starting with a whole note G2 and followed by a rhythmic accompaniment of eighth notes.

19

Musical notation for system 19, measures 1-4. The first staff is a bass clef with a key signature of three flats (Bb, Eb, Ab). It contains a melodic line with eighth and sixteenth notes. The second staff is a bass clef with a key signature of three flats, starting with a whole note G2 and followed by a rhythmic accompaniment of eighth notes.

20

Musical notation for system 20, measures 1-4. The first staff is a bass clef with a key signature of one flat (Bb). It contains a melodic line with eighth and sixteenth notes. The second staff is a bass clef with a key signature of one flat, starting with a whole note G2 and followed by a rhythmic accompaniment of eighth notes.

21

Musical notation for system 21, measures 1-4. The first staff is a bass clef with a key signature of three sharps (F#, C#, G#). It contains a melodic line with eighth and sixteenth notes. The second staff is a bass clef with a key signature of three sharps, starting with a whole note G2 and followed by a rhythmic accompaniment of eighth notes.

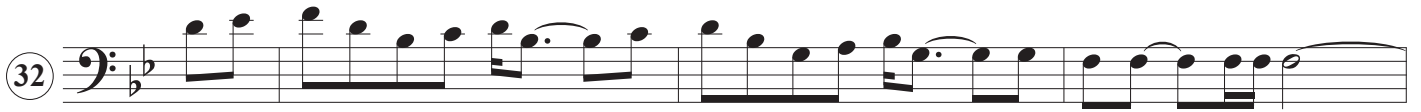
2. (Bass Clef) Moving Chromatically Upward (No. 22 -35)

Swing!





32



First staff of system 32, bass clef, key signature of one flat (Bb). The staff contains a sequence of eighth and quarter notes with slurs and accents.



Second staff of system 32, bass clef, key signature of one flat (Bb). The staff contains a sequence of eighth and quarter notes with slurs and accents.

33




First staff of system 33, bass clef, key signature of three sharps (F#, C#, G#). The staff contains a sequence of eighth and quarter notes with slurs and accents.

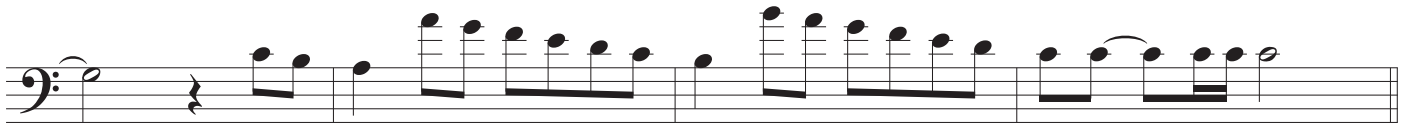


Second staff of system 33, bass clef, key signature of three sharps (F#, C#, G#). The staff contains a sequence of eighth and quarter notes with slurs and accents.

34



First staff of system 34, bass clef, key signature of one flat (Bb). The staff contains a sequence of eighth and quarter notes with slurs and accents.



Second staff of system 34, bass clef, key signature of one flat (Bb). The staff contains a sequence of eighth and quarter notes with slurs and accents.

35



First staff of system 35, bass clef, key signature of two flats (Bb, Eb). The staff contains a sequence of eighth and quarter notes with slurs and accents.



Second staff of system 35, bass clef, key signature of two flats (Bb, Eb). The staff contains a sequence of eighth and quarter notes with slurs and accents.

3. (Tenor Clef) Two Octaves of Range, Moving Chromatically Upward (No. 36 -60)

36 **Swing!** $\text{♩} = \text{♩}$ $\overset{3}{\text{}} \text{♩}$

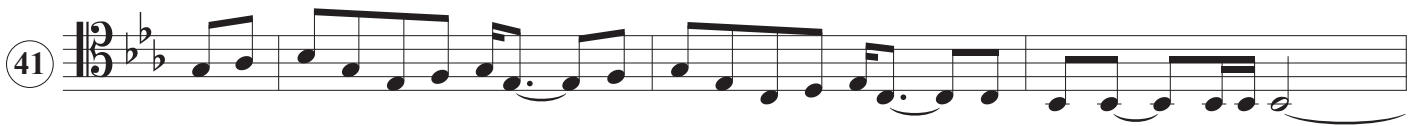
37

38

39

40

41



First staff of system 41: Treble clef, 2/3 time signature, key signature of two flats (B-flat, E-flat). The melody consists of eighth and quarter notes, ending with a half note.



Second staff of system 41: Bass clef, 2/3 time signature, key signature of two flats. The accompaniment features a bass line with eighth and quarter notes, including a triplet of eighth notes.

42



First staff of system 42: Treble clef, 2/3 time signature, key signature of three sharps (F-sharp, C-sharp, G-sharp). The melody consists of eighth and quarter notes, ending with a half note.



Second staff of system 42: Bass clef, 2/3 time signature, key signature of three sharps. The accompaniment features a bass line with eighth and quarter notes, including a triplet of eighth notes.

43



First staff of system 43: Treble clef, 2/3 time signature, key signature of two flats. The melody consists of eighth and quarter notes, ending with a half note.



Second staff of system 43: Bass clef, 2/3 time signature, key signature of two flats. The accompaniment features a bass line with eighth and quarter notes, including a triplet of eighth notes.

44



First staff of system 44: Treble clef, 2/3 time signature, key signature of three flats (B-flat, E-flat, A-flat). The melody consists of eighth and quarter notes, ending with a half note.



Second staff of system 44: Bass clef, 2/3 time signature, key signature of three flats. The accompaniment features a bass line with eighth and quarter notes, including a triplet of eighth notes.

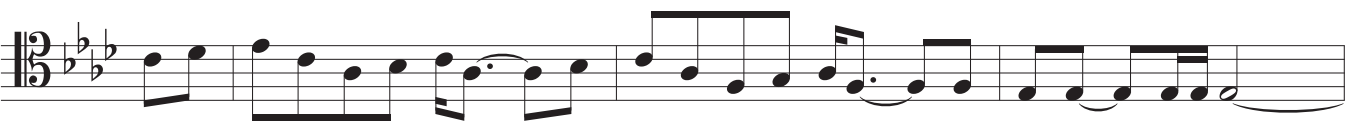
45




First staff of system 45: Treble clef, 2/3 time signature, key signature of one sharp (F-sharp). The melody consists of eighth and quarter notes, ending with a half note.



Second staff of system 45: Bass clef, 2/3 time signature, key signature of one sharp. The accompaniment features a bass line with eighth and quarter notes, including a triplet of eighth notes.

46  Musical notation for system 46, first staff. It begins with a treble clef, a key signature of three flats (B-flat, E-flat, A-flat), and a 3/8 time signature. The melody consists of eighth and quarter notes, with a dotted quarter note in the fourth measure.

 Musical notation for system 46, second staff. It begins with a bass clef, a key signature of three flats, and a 3/8 time signature. The accompaniment features a mix of eighth and quarter notes.

47  Musical notation for system 47, first staff. It begins with a treble clef, a key signature of three sharps (F-sharp, C-sharp, G-sharp), and a 3/8 time signature. The melody consists of eighth and quarter notes, with a dotted quarter note in the fourth measure.

 Musical notation for system 47, second staff. It begins with a bass clef, a key signature of three sharps, and a 3/8 time signature. The accompaniment features a mix of eighth and quarter notes.

48  Musical notation for system 48, first staff. It begins with a treble clef, a key signature of three flats, and a 3/8 time signature. The melody consists of eighth and quarter notes, with a dotted quarter note in the fourth measure.

 Musical notation for system 48, second staff. It begins with a bass clef, a key signature of three flats, and a 3/8 time signature. The accompaniment features a mix of eighth and quarter notes.

49  Musical notation for system 49, first staff. It begins with a treble clef, a key signature of three sharps, and a 3/8 time signature. The melody consists of eighth and quarter notes, with a dotted quarter note in the fourth measure.

 Musical notation for system 49, second staff. It begins with a bass clef, a key signature of three sharps, and a 3/8 time signature. The accompaniment features a mix of eighth and quarter notes.

50  Musical notation for system 50, first staff. It begins with a treble clef, a key signature of three flats, and a 3/8 time signature. The melody consists of eighth and quarter notes, with a dotted quarter note in the fourth measure.

 Musical notation for system 50, second staff. It begins with a bass clef, a key signature of three flats, and a 3/8 time signature. The accompaniment features a mix of eighth and quarter notes.

51

Musical notation for exercise 51, first staff. The key signature has three flats (B-flat, E-flat, A-flat) and the time signature is 3/8. The melody consists of eighth and quarter notes with some slurs.

Musical notation for exercise 51, second staff. This is the bass line, featuring a half note followed by eighth and quarter notes.

52

Musical notation for exercise 52, first staff. The key signature has two sharps (F-sharp, C-sharp) and the time signature is 3/8. The melody consists of eighth and quarter notes with some slurs.

Musical notation for exercise 52, second staff. This is the bass line, featuring a half note followed by eighth and quarter notes.

53

Musical notation for exercise 53, first staff. The key signature has three flats (B-flat, E-flat, A-flat) and the time signature is 3/8. The melody consists of eighth and quarter notes with some slurs.

Musical notation for exercise 53, second staff. This is the bass line, featuring a half note followed by eighth and quarter notes.

54

Musical notation for exercise 54, first staff. The key signature has three sharps (F-sharp, C-sharp, G-sharp) and the time signature is 3/8. The melody consists of eighth and quarter notes with some slurs.

Musical notation for exercise 54, second staff. This is the bass line, featuring a half note followed by eighth and quarter notes.

55

Musical notation for exercise 55, first staff. The key signature has one flat (B-flat) and the time signature is 3/8. The melody consists of eighth and quarter notes with some slurs.

Musical notation for exercise 55, second staff. This is the bass line, featuring a half note followed by eighth and quarter notes.

56

Musical notation for system 56, first staff. The key signature has four flats (B-flat, E-flat, A-flat, D-flat) and the time signature is 3/8. The melody consists of eighth and quarter notes with some slurs.

Musical notation for system 56, second staff. The accompaniment features a steady eighth-note pattern in the right hand and a bass line in the left hand.

57

Musical notation for system 57, first staff. The key signature changes to three flats (B-flat, E-flat, A-flat) and the time signature is 3/8. The melody continues with eighth and quarter notes.

Musical notation for system 57, second staff. The accompaniment continues with eighth-note patterns in both hands.

58

Musical notation for system 58, first staff. The key signature has four flats (B-flat, E-flat, A-flat, D-flat) and the time signature is 3/8. The melody continues with eighth and quarter notes.

Musical notation for system 58, second staff. The accompaniment continues with eighth-note patterns in both hands.

59

Musical notation for system 59, first staff. The key signature changes to three sharps (F-sharp, C-sharp, G-sharp) and the time signature is 3/8. The melody continues with eighth and quarter notes.

Musical notation for system 59, second staff. The accompaniment continues with eighth-note patterns in both hands.

60

Musical notation for system 60, first staff. The key signature has four flats (B-flat, E-flat, A-flat, D-flat) and the time signature is 3/8. The melody continues with eighth and quarter notes.

Musical notation for system 60, second staff. The accompaniment continues with eighth-note patterns in both hands.

4. (Treble Clef) Two Octaves of Range, Moving Chromatically Upward (No. 61 -85)

Swing! $\text{♩} = \text{♩}^3$

61

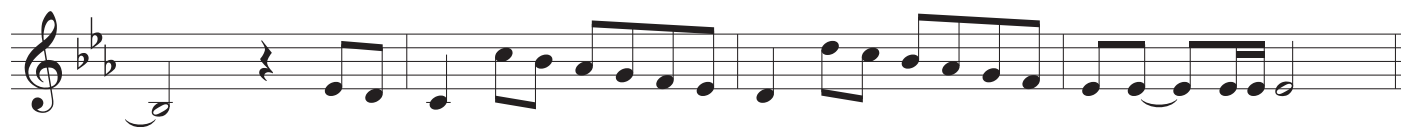
62

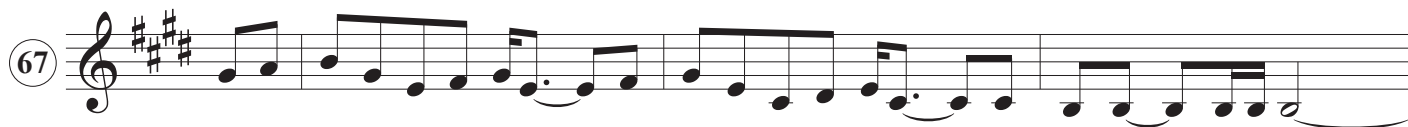
63

64

65

66  Musical notation for measure 66, top staff. Treble clef, key signature of two flats (B-flat, E-flat). The melody consists of eighth and quarter notes.

 Musical notation for measure 66, bottom staff. Treble clef, key signature of two flats. The accompaniment consists of eighth and quarter notes.

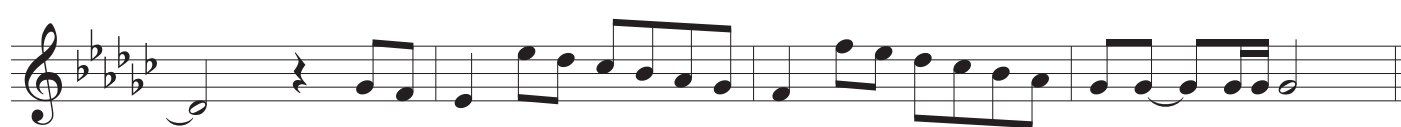
67  Musical notation for measure 67, top staff. Treble clef, key signature of three sharps (F-sharp, C-sharp, G-sharp). The melody consists of eighth and quarter notes.

 Musical notation for measure 67, bottom staff. Treble clef, key signature of three sharps. The accompaniment consists of eighth and quarter notes.


68  Musical notation for measure 68, top staff. Treble clef, key signature of two flats. The melody consists of eighth and quarter notes.

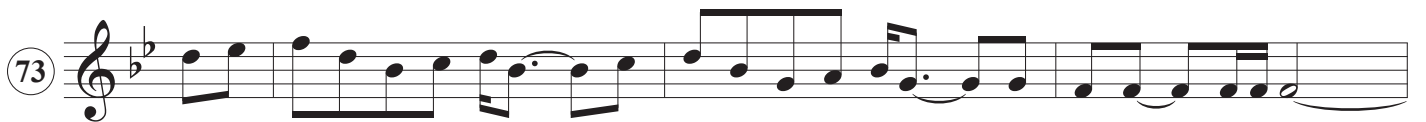
 Musical notation for measure 68, bottom staff. Treble clef, key signature of two flats. The accompaniment consists of eighth and quarter notes.

69  Musical notation for measure 69, top staff. Treble clef, key signature of four flats (B-flat, E-flat, A-flat, D-flat). The melody consists of eighth and quarter notes.

 Musical notation for measure 69, bottom staff. Treble clef, key signature of four flats. The accompaniment consists of eighth and quarter notes.

70  Musical notation for measure 70, top staff. Treble clef, key signature of one sharp (F-sharp). The melody consists of eighth and quarter notes.

 Musical notation for measure 70, bottom staff. Treble clef, key signature of one sharp. The accompaniment consists of eighth and quarter notes.



76

Musical notation for measure 76, first staff. The key signature is three flats (B-flat, E-flat, A-flat). The melody consists of eighth and quarter notes.

Musical notation for measure 76, second staff. The accompaniment consists of eighth and quarter notes.

77

Musical notation for measure 77, first staff. The key signature changes to two sharps (F-sharp, C-sharp). The melody consists of eighth and quarter notes.

Musical notation for measure 77, second staff. The accompaniment consists of eighth and quarter notes.

78

Musical notation for measure 78, first staff. The key signature is two flats (B-flat, E-flat). The melody consists of eighth and quarter notes.

Musical notation for measure 78, second staff. The accompaniment consists of eighth and quarter notes.

79

Musical notation for measure 79, first staff. The key signature is three sharps (F-sharp, C-sharp, G-sharp). The melody consists of eighth and quarter notes.


Musical notation for measure 79, second staff. The accompaniment consists of eighth and quarter notes.

80

Musical notation for measure 80, first staff. The key signature is one flat (B-flat). The melody consists of eighth and quarter notes.

Musical notation for measure 80, second staff. The accompaniment consists of eighth and quarter notes.

81



Musical notation for system 81, first staff. The key signature is three flats (B-flat, E-flat, A-flat). The melody consists of eighth and quarter notes with slurs and ties.



Musical notation for system 81, second staff. The accompaniment features a bass line with eighth and quarter notes, including slurs and ties.

82



Musical notation for system 82, first staff. The key signature changes to one sharp (F#). The melody continues with eighth and quarter notes.



Musical notation for system 82, second staff. The accompaniment continues with eighth and quarter notes.

83

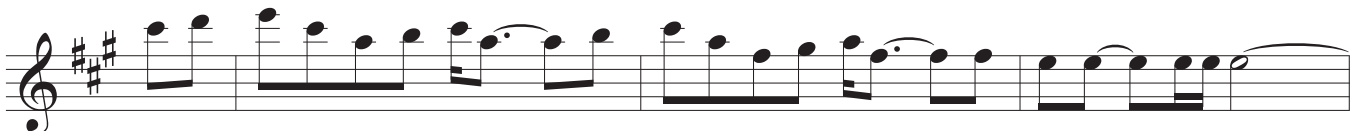


Musical notation for system 83, first staff. The key signature returns to three flats. The melody features eighth and quarter notes.



Musical notation for system 83, second staff. The accompaniment continues with eighth and quarter notes.

84



Musical notation for system 84, first staff. The key signature changes to two sharps (F#, C#). The melody consists of eighth and quarter notes.



Musical notation for system 84, second staff. The accompaniment continues with eighth and quarter notes.

85



Musical notation for system 85, first staff. The key signature returns to three flats. The melody features eighth and quarter notes.



Musical notation for system 85, second staff. The accompaniment continues with eighth and quarter notes.