

# Hot Cross Buns

*Transposition Inquisition, No. 101*

Essential Elements, No. 17

arr Martorano

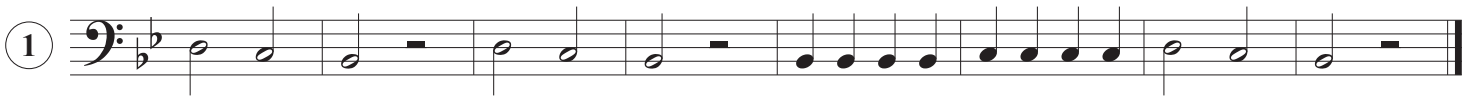
From the Book: "Try this song on your mouthpiece only. Then play it on your instrument."



Scale Degree	3	2	1	3	2	1	1	1	1	1	2	2	2	2	3	2	1
Solfege	mi	re	Do	mi	re	Do	Do	Do	Do	Do	re	re	re	re	mi	re	Do

## Mental Transposition

Before continuing, try playing this song in all keys only using the pattern above. Take a brief moment before each new key and remind yourself of the corresponding note names to scale degree/solfege syllable. If problems persist, try singing the pattern while fingering along on the horn.



5 

6 

7 

8 

9 

10 

11 

12 