

# Lightly Row

Transposition Inquisition, No. 104

Essential Elements, No. 25

arr. Martorano

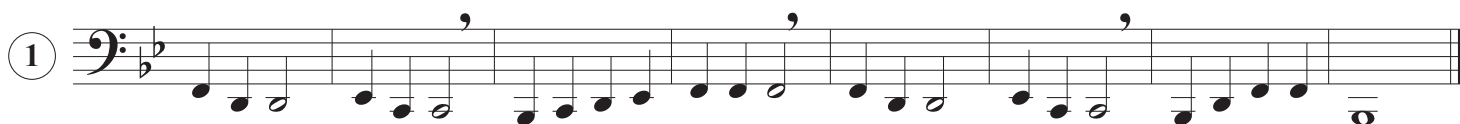
From the Book: "Try this song on your mouthpiece only. Then play it on your instrument."



Scale Degree	5	3	3	4	2	2	1	2	3	4	5	5	5	5	3	3	4	2	2	1	3	5	5	1
Solfege	Sol	mi	mi	Fa	re	re	Do	re	mi	Fa	Sol	Sol	Sol	Sol	mi	mi	Fa	re	re	Do	mi	Sol	Sol	Do

## Mental Transposition

Before continuing, try playing this song in all keys only using the pattern above. Take a brief moment before each new key and remind yourself of the corresponding note names to scale degree/solfege syllable. If problems persist, try singing the pattern while fingering along on the horn.



⑤



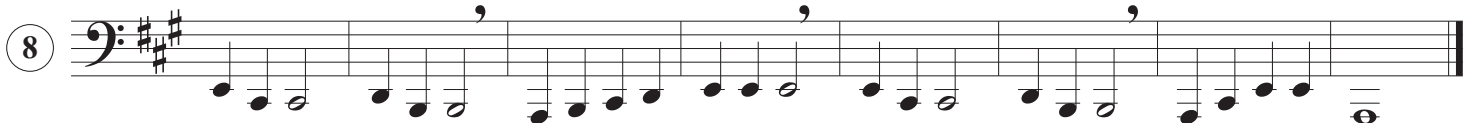
⑥



⑦



⑧



⑨



⑩



⑪



⑫

