

# TRANSPOSITION INQUISITION

No. 134

EXCERPTS FROM

## ADVANCED STUDIES

FOR B $\flat$  BASS

by

H. W. Tyrell

### ANALYSIS:

#### Phrase 1

Musical notation for Phrase 1, measures 1-4. The notation is in bass clef with a key signature of one flat (B-flat major). It shows a sequence of notes with fingerings (S, L, T, R, M) and slurs. A dashed line above the staff indicates a phrase boundary.

Key of B $\flat$  Maj: V      vii<sup>o7</sup>      IV      ii

Musical notation for Phrase 1, measures 5-8. The notation is in bass clef with a key signature of one flat (B-flat major). It shows a sequence of notes with fingerings (T, L, S, F, M, R, D, T, D, R, M, F, S) and slurs. A dashed line above the staff indicates a phrase boundary. The label "(IAC)" is placed above the staff between measures 5 and 6.

I      I<sup>64</sup>      V<sup>7</sup>      ii      vi

Musical notation for Phrase 1, measures 9-12. The notation is in bass clef with a key signature of one flat (B-flat major). It shows a sequence of notes with fingerings (S, L, T, R, B, T, L, S, L, S, F, S, B, F, M, R, D) and slurs. A dashed line above the staff indicates a phrase boundary. The label "PAC" is placed above the staff between measures 11 and 12.

V<sup>7</sup>      I

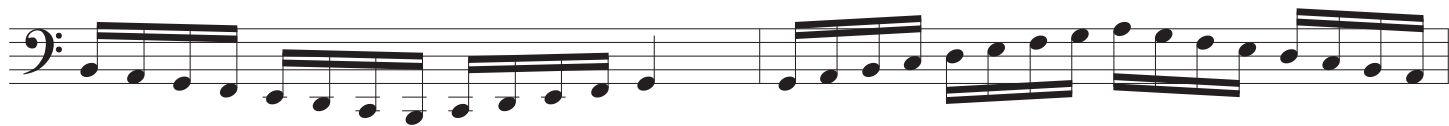
# Advanced Studies for B $\flat$ Bass

TRANSPOSITION INQUISITION No. 134

H. W. Tyrell  
arr. Martorano

Study: No. 16  
Measures: 5-8  
Original Key: B $\flat$  Major  
Original Tempo: Allegretto (quarter note = 96 bpm)

## *1-11) CHROMATICALLY ASCENDING TO 8VA*



③

Exercise 3 consists of three staves of music in bass clef with a key signature of three flats (B-flat, E-flat, A-flat). The first staff begins with a circled '3'. The music features a sequence of eighth and sixteenth notes, with some slurs and ties. The second staff continues the melodic line with similar rhythmic patterns. The third staff concludes the exercise with a final note and a fermata.

④

Exercise 4 consists of three staves of music in bass clef with a key signature of two sharps (F-sharp, C-sharp). The first staff begins with a circled '4'. The music features a sequence of eighth and sixteenth notes, with some slurs and ties. The second staff continues the melodic line with similar rhythmic patterns. The third staff concludes the exercise with a final note and a fermata.

⑤

Exercise 5 consists of three staves of music in bass clef with a key signature of two flats (B-flat, E-flat). The first staff begins with a circled '5'. The music features a sequence of eighth and sixteenth notes, with some slurs and ties. The second staff continues the melodic line with similar rhythmic patterns. The third staff concludes the exercise with a final note and a fermata.

⑥



⑦



⑧



⑨

⑩

⑪

# Advanced Studies for B $\flat$ Bass

TRANSPOSITION INQUISITION No. 134

H. W. Tyrell  
arr. Martorano

Study: No. 16  
Measures: 5-8  
Original Key: B $\flat$  Major  
Original Tempo: Allegretto (quarter note = 96 bpm)

## 12-22) CHROMATICALLY DESCENDING TO 8VB



14

15

16

①7

①7

①7

①8

①8

①8

①9

①9

①9



20

21

22