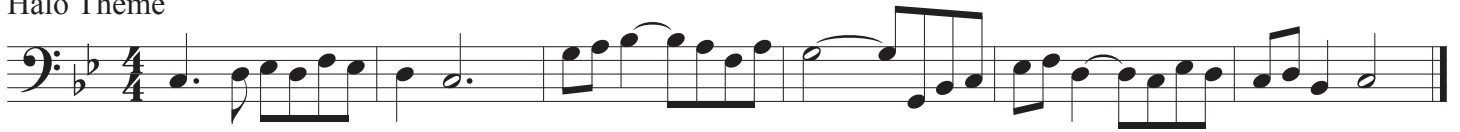


Themes from Cinema and Gaming

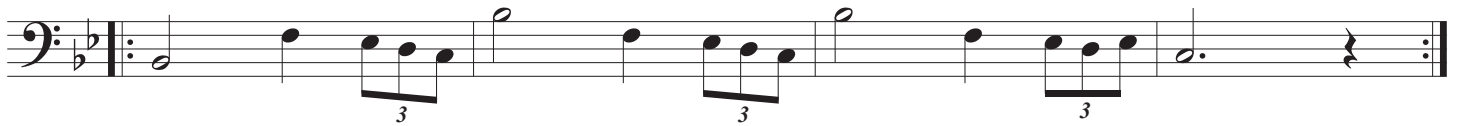
Mini-Etude for Tuba, No. 3

arr. Dr. Guytano Martorano III

Halo Theme



Star Wars Main Theme



Lord of the Rings Theme



The Avengers Main Theme



Dragonborn, from Elder Scrolls V: Skyrim



Lost Woods, from The Legend of Zelda: Ocarina of Time



Mii Channel Theme



Jurassic Park Theme

Two staves of musical notation for the Jurassic Park Theme. The first staff begins with a bass clef, a key signature of two flats (B-flat and E-flat), and a common time signature. The melody consists of a series of quarter and eighth notes, ending with a double bar line. The second staff continues the melody with similar rhythmic patterns.

Mandalorian Theme

A single staff of musical notation for the Mandalorian Theme. It features a bass clef, a key signature of two flats, and a common time signature. The melody is characterized by a fast, repetitive eighth-note pattern with occasional rests, ending with a double bar line.

Luigi's Mansion Theme

Two staves of musical notation for Luigi's Mansion Theme. The first staff starts with a bass clef, a key signature of one sharp (F#), and a common time signature. The melody includes quarter notes, eighth notes, and a whole note with a fermata. The second staff continues the piece with similar rhythmic elements and a final double bar line.

Harry Potter Theme

Two staves of musical notation for the Harry Potter Theme. The first staff uses a bass clef, a key signature of two flats, and a 3/4 time signature. The melody is composed of quarter and eighth notes. The second staff continues the melody with a final double bar line.

Kirby Gourmet Race Theme

A single staff of musical notation for the Kirby Gourmet Race Theme. It features a bass clef, a key signature of two flats, and a 4/4 time signature. The melody is a lively sequence of eighth and sixteenth notes, ending with a double bar line.

"Still Alive" from Potral

Three staves of musical notation for "Still Alive" from Potral. The first staff begins with a bass clef, a key signature of one sharp (F#), and a common time signature. It includes first and second endings, indicated by bracketed lines and numbers 1 and 2. The melody is a mix of quarter and eighth notes. The second and third staves continue the piece, with the third staff ending with a double bar line.