

TRANSPOSITION INQUISITION

No. 129

EXCERPTS FROM

ADVANCED STUDIES

FOR B \flat BASS

by

H. W. Tyrell

ANALYSIS:

Phrase 1

Key of E \flat Maj: I - - - - - V I ii V

Phrase 2

IV V/V V Key of Cm: V i V⁶

V⁴³ i Key of E \flat : V⁷ - - - - - I

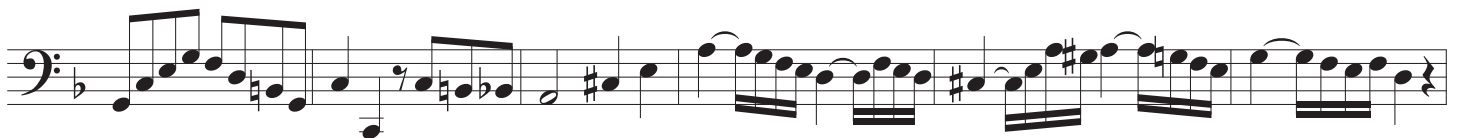
Advanced Studies for B \flat Bass

TRANSPOSITION INQUISSION No. 129

H. W. Tyrell
arr. Martorano

Study: No. 11
Measures: 1-16
Original Key: E flat Major
Original Tempo: Andante (quarter note = 96 bpm)

1-11) CHROMATICALLY ASCENDING TO 8VA



③

④

⑤

⑥

Exercise 6: Three staves of music in bass clef, key signature of two sharps (F# and C#). The first staff contains a melodic line with eighth and sixteenth notes. The second staff contains a more complex melodic line with many sixteenth notes. The third staff contains a simpler melodic line with eighth notes and rests.

⑦

Exercise 7: Three staves of music in bass clef, key signature of one flat (Bb). The first staff contains a melodic line with eighth and sixteenth notes. The second staff contains a more complex melodic line with many sixteenth notes. The third staff contains a simpler melodic line with eighth notes and rests.

⑧

Exercise 8: Three staves of music in bass clef, key signature of three sharps (F#, C#, G#). The first staff contains a melodic line with eighth and sixteenth notes. The second staff contains a more complex melodic line with many sixteenth notes and some accidentals. The third staff contains a simpler melodic line with eighth notes and rests.

9

Exercise 9: Three staves of bass clef notation. The first staff begins with a circled '9'. The music features a sequence of eighth and sixteenth notes, including slurs and ties, across the three staves.

10

Exercise 10: Three staves of bass clef notation. The first staff begins with a circled '10'. The key signature has three flats. The music features a sequence of eighth and sixteenth notes, including slurs and ties, across the three staves.

11

Exercise 11: Three staves of bass clef notation. The first staff begins with a circled '11'. The key signature has two sharps. The music features a sequence of eighth and sixteenth notes, including slurs and ties, across the three staves.

Advanced Studies for B \flat Bass

TRANSPOSITION INQUISITION No. 129

H. W. Tyrell
arr. Martorano

Study: No. 11
Measures: 1-16
Original Key: E flat Major
Original Tempo: Andante (quarter note = 96 bpm)

12-22) CHROMATICALLY DESCENDING TO 8VB

⑫

⑬

⑭

⑮

⑯

17



18



19



20

21

22