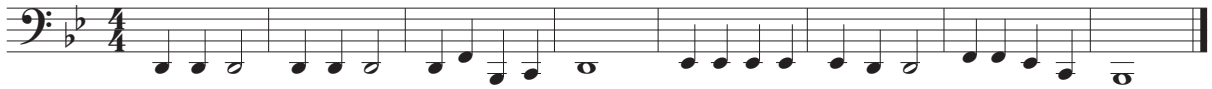


# Jingle Bells

*Transposition Inquisition No. 116*

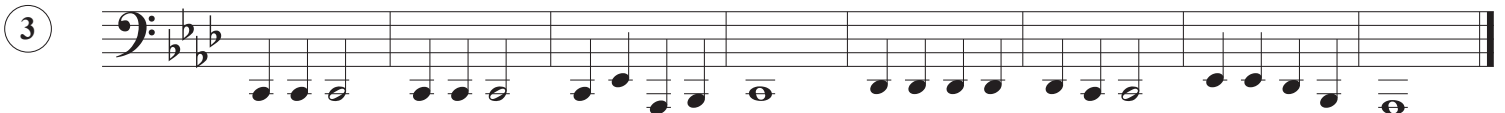
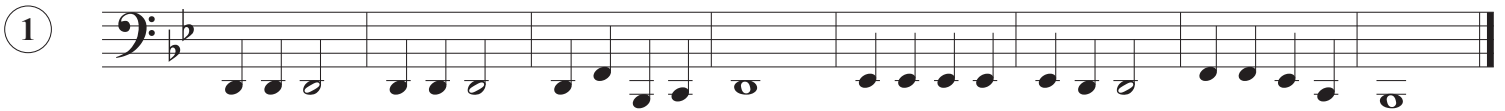
Essential Elements, No. 38  
arr. Martorano



Scale Degree	3	3	3	3	3	3	3	5	1	2	3	4	4	4	4	4	3	3	5	5	4	2	1
Solfege	mi	mi	mi	mi	mi	mi	mi	Sol	Do	re	mi	fa	fa	fa	fa	fa	mi	mi	Sol	Sol	fa	re	Do

### Mental Transposition

*Before continuing, try playing this song in all keys only using the pattern above. Take a brief moment before each new key and remind yourself of the corresponding note names to scale degree/solfege syllable. If problems persist, try singing the pattern while fingering along on the horn.*



5

6

7

8

9

10

11

12